



Energy Solutions
INTERNATIONAL, INC.

LX
GOLD

LED TROFFER KIT / FIXTURE
COLOR TUNING

TYPE	PROJECT NAME	DATE

FEATURES

- Energy efficient replacement from fluorescent technology
- 150,000 hr + L70
- Seoul Semiconductor LEDs
- Philips Xitanium / Sylvania Optotronic LED Drivers
- Dimming options available upon request
- Wide range of lumen and wattage packages available
- 135 lumen per watt delivered / 82+ CRI
- Color tune with simple controls systems

TECHNICAL INFORMATION

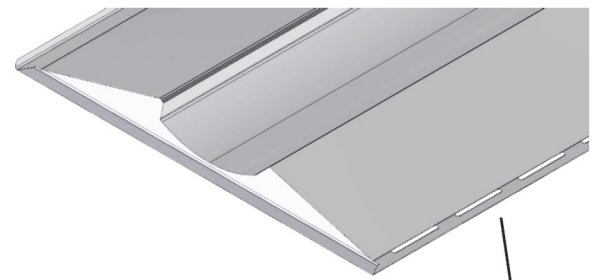
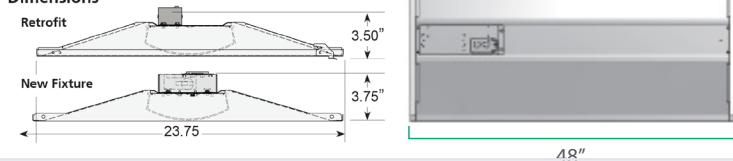
- **Housing:** All aluminum construction minimizes weight and maximizes thermal performance of the LED light engine.
- **Finish:** All parts are painted with a matte white paint to provide soft, even illumination.
- **Fixture Mounting:** Fixture is designed for lay-in, recessed applications only.
- **LEDs:** Best efficacy of mid-level power LEDs, 80+ CRI, utilizes aluminum substrate to provide superior thermal management.

INSTALLATION POINTS

RETROFIT INSTRUCTIONS

- The existing door frame must be removed along with all of the existing fluorescent components in the fixture. A hinge rail is inserted between the ceiling grid and fixture housing at each end. The hinge tabs on the retrofit insert are engaged with the slots in the hinge rails. With the insert hanging open, the electrical connection can be made and ground strap installed. The final step is to close the new LED door and secure the latches.

Dimensions

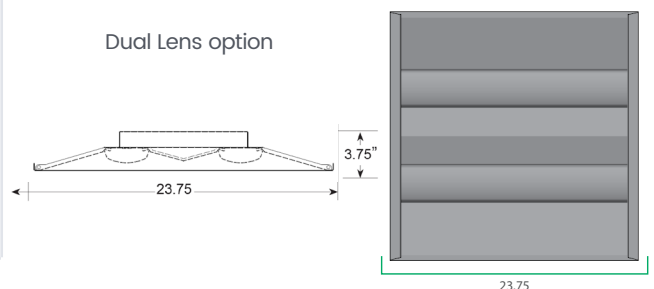


Air Handling on Fixture.

For proper Air Handling on an LX Kit Side Rails are omitted.



Dual Lens option



MADE IN THE USA

LX 17001



Energy Solutions
INTERNATIONAL, INC.

LX
GOLD

ORDERING INFORMATION

Part Number = Style + Size + Light Engine + Color Temperature + Options

(Example: F-24LX-L4N-2765-CT = 2'x4' LX Retrofit Kit with a 32 Watt Light Engine with 2700K - 6500K Color Tuning LED Boards)

STYLE	SIZE	LIGHT ENGINE	2765 COLOR TEMP.	OPTIONS	CT COLOR TUNING
K - RETROFIT KIT	14LX - 1' X 4'	L4L - (1X4) - 14W - 1587 - LUMENS		FR - FROSTED LENS	
F - FIXTURE	22LX - 2' X 2'	L4N - (1X4) - 21W - 2316 - LUMENS		PA - PRE ASSEMBLED	
	24LX - 2' X 4'	L4M - (1X4) - 25W 2725 - LUMENS		DF - DOOR FRAME KIT	
		L4H - (1X4) - 32W 3414 - LUMENS		D - 0-10V DIMMING	
		L4V - (1X4) - 38W 3978 - LUMENS		AH - AIR HANDLING	
		L2L - (2X2) - 17W 1880 - LUMENS		EM - EMERGENCY DRIVER	
		L2N - (2X2) - 20W 2160 - LUMENS		DL - DUAL LENS	
		L2H - (2X2) - 22W 2365 - LUMENS			
		L2VN - (2X2) - 30W 3210 - LUMENS			
		L2VH - (2X2) - 38W 4050 - LUMENS			
		L2VV - (2X2) - 44W 4620 - LUMENS			
		L4L - (2X4) - 24W 3115 - LUMENS			
		L4LN - (2X4) - 26W 3304 - LUMENS			
		L4LM - (2X4) - 28W 3532 - LUMENS			
		L4LH - (2X4) - 30W 3732 - LUMENS			
		L4N - (2X4) - 32W 4030 - LUMENS			
		L4NH - (2X4) - 35W 4364 - LUMENS			
		L4H - (2X4) - 38W 4635 - LUMENS			
		L4V - (2X4) - 44W 5180 - LUMENS			

CONTACT FACTORY FOR CONTROLS
OPTIONS AND COMPATIBILITY

CONTROLS CAPABILITIES

"All products are IoT-Ready!"



OCCUPANCY / VACANCY



GROUPING



DIMMING



DAYLIGHT HARVESTING



SCHEDULING



NETWORKED LIGHTING CONTROLS



MADE IN THE USA

LX 17001