

TYPE	PROJECT NAME	DATE

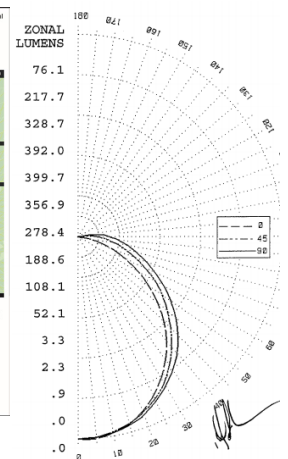
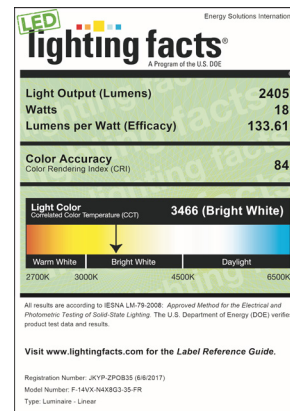
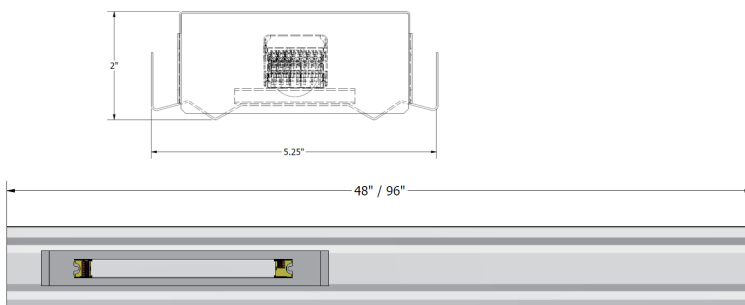
FEATURES

- Energy efficient replacement from fluorescent technology
- 150,000 hr + L70
- NKT LED Boards
- Name brand LED Drivers
- Dimming option available upon request
- Wide range of lumen and wattage packages available
- 120 - 142 lumens per watt delivered
- Suited for damp locations
- Valence / Cove applications
- Existing linear applications

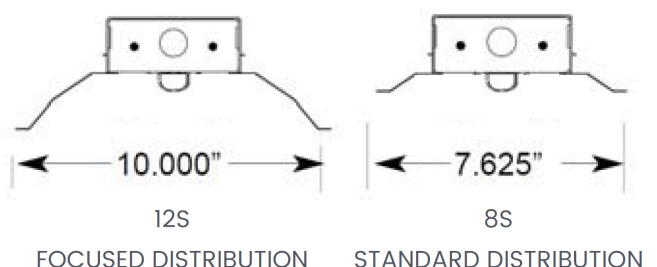
TECHNICAL INFORMATION

- **Housing:** 20ga. (0.036") pre-painted die formed steel with sufficient knockouts for mounting and electrical supply.
- **LEDs:** Best efficacy of mid level power LEDs, 80+ CRI, utilizes aluminum substrate to provide a advanced thermal managment system.
- **Reflector:** Can be ordered with a 95% specular, a 85% specular, or a 92% diffuse white enamel. Substrate is 0.032" high quality Aluminum. The reflector profile is optimized using computer analysis and manufactured using state of the art CNC equipment. A protective premask is applied to all reflective surfaces prior to manufacture.
- **Construction:** The solid 0.032" steel body provides added rigidity. The socket bars and endplates securely snap into place. The reflectors are attached to the fixture body with a tab-lock / quarter-turn system.
- **Retrofit:** Adjustable brackets can be hand-formed in the field to fit channels between 4.25" - 5.00"

DIMENSIONAL INFORMATION



REFLECTOR PROFILES





Energy Solutions
INTERNATIONAL, INC.

VX
GOLD

ORDERING INFORMATION

Part Number = Style + Size + Light Engine + Color Temperature + Options

(Example: K-14VX-N4N3G3-40-FR = 1'x4' VX Retrofit Kit at 33 Watts with 4000K color temp and a Frosted Lens)

STYLE	SIZE	LIGHT ENGINE 1x4 1 Strip	COLOR TEMP.	OPTIONS
K - RETROFIT KIT	14VX - 1' X 4'	N4LG2 - 4' - 15W - 2059 LUMENS	35 - 3500K COLOR TEMP	FR - FROSTED LENS
F - NEW FIXTURE	18VX - 1' X 8'	N4NG2 - 4' - 20W - 2730 LUMENS	40 - 4000K COLOR TEMP	D - 0-10V DIMMING
		N4MG2 - 4' - 24W - 3145 LUMENS	50 - 5000K COLOR TEMP	SD - STEP DIM
		N4SG2 - 4' - 27W - 3597 LUMENS		LVD - LINE VOLTAGE DIMMING
		N4HG2 - 4' - 30W - 3883 LUMENS		OBS - ON BOARD SENSOR
		N4VG2 - 4' - 33W - 4208 LUMENS		12S - FOCUSED DISTRIBUTION
		N4VLG2 - 8' - 22W - 2931 LUMENS		8S - STANDARD DISTRIBUTION
		N4LLG2 - 8' - 25W - 3314 LUMENS		
		N4LG2 - 8' - 29W - 3949 LUMENS		
		N4NLG2 - 8' - 37W - 4958 LUMENS		
		N4NG2 - 8' - 40W - 5334 LUMENS		
		N4MG2 - 8' - 48W - 6290 LUMENS		
		N4SG2 - 8' - 55W - 7277 LUMENS		
		N4HG2 - 8' - 60W - 7848 LUMENS		
		N4VG2 - 8' - 65W - 8416 LUMENS		

CONTROLS CAPABILITIES

"All products are IoT-Ready!"



OCCUPANCY / VACANCY



GROUPING



DIMMING



DAYLIGHT HARVESTING



SCHEDULING



NETWORKED LIGHTING CONTROLS



MADE IN THE USA

VX 19001